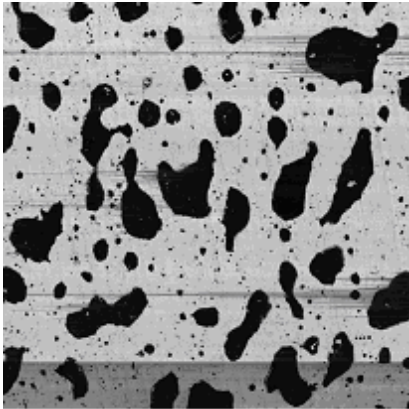


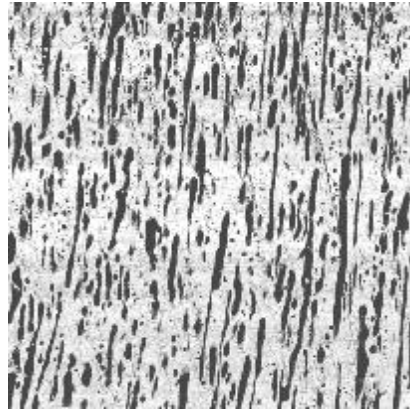
Effect of compounding method (EO-13)



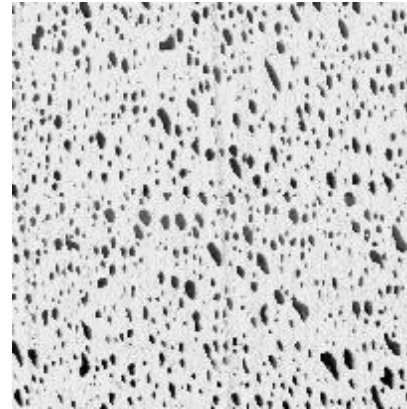
Mixing bowl



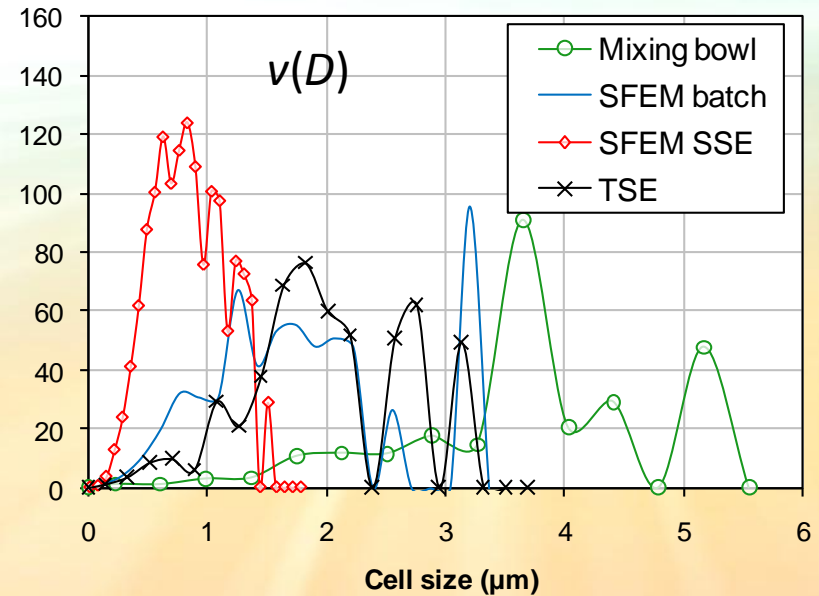
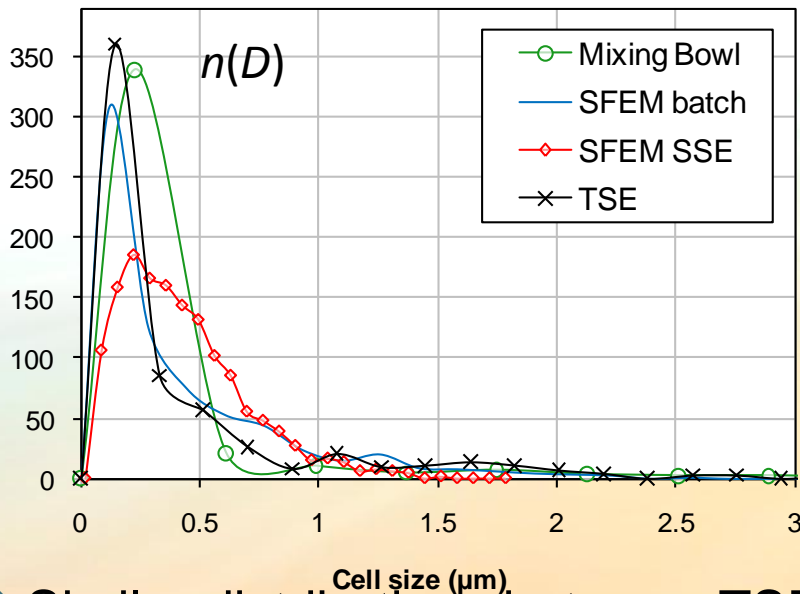
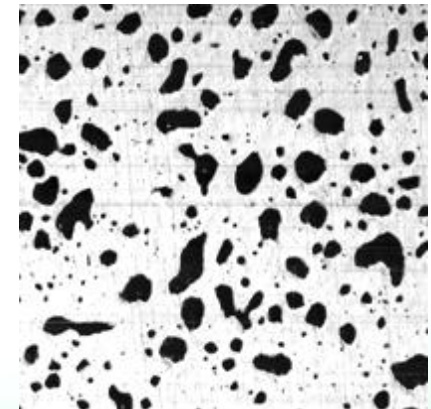
Batch SFEM



SSE w/SFEM



TSE (no SFEM)

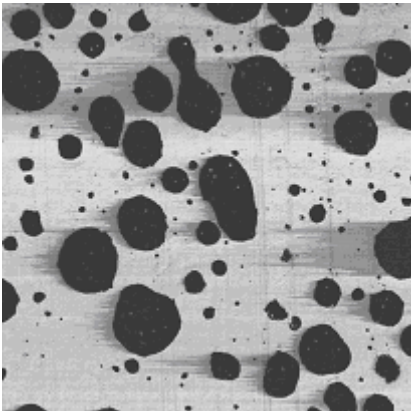


- Similar distributions between TSE and batch SFEM – **extension** dominates
- Distribution from mixing bowl significantly broader – **shear** dominates

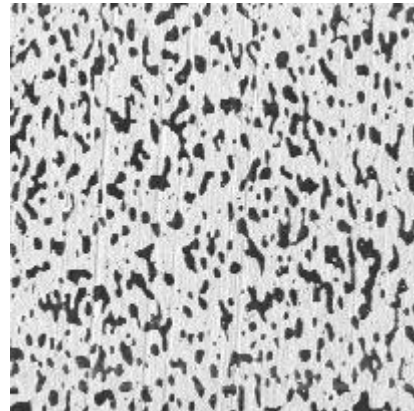
Effect of compounding method (EO-0.5)



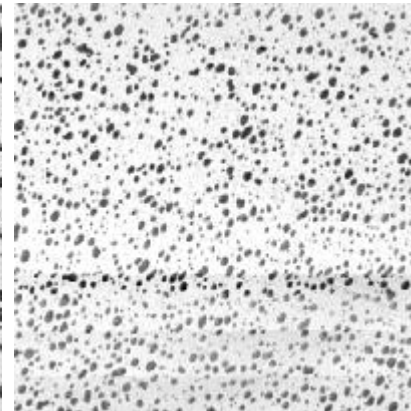
Mixing bowl



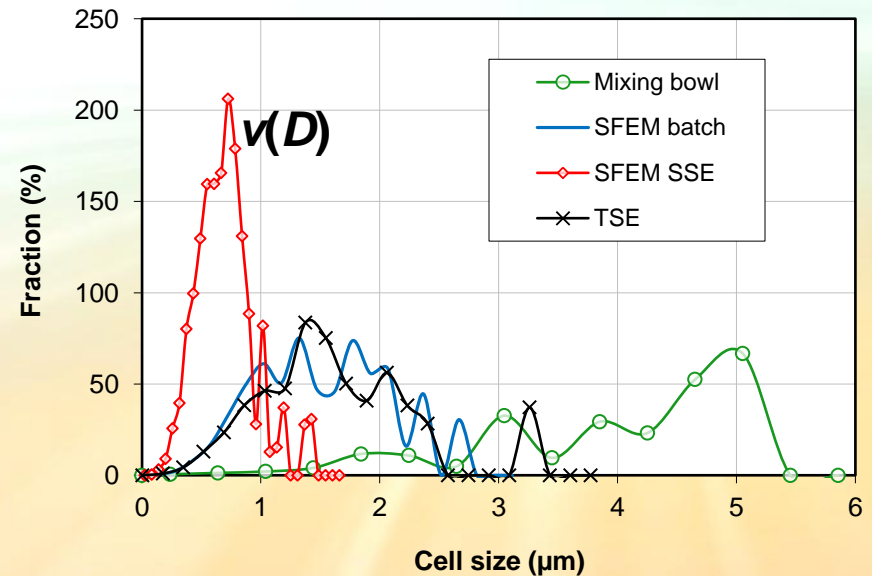
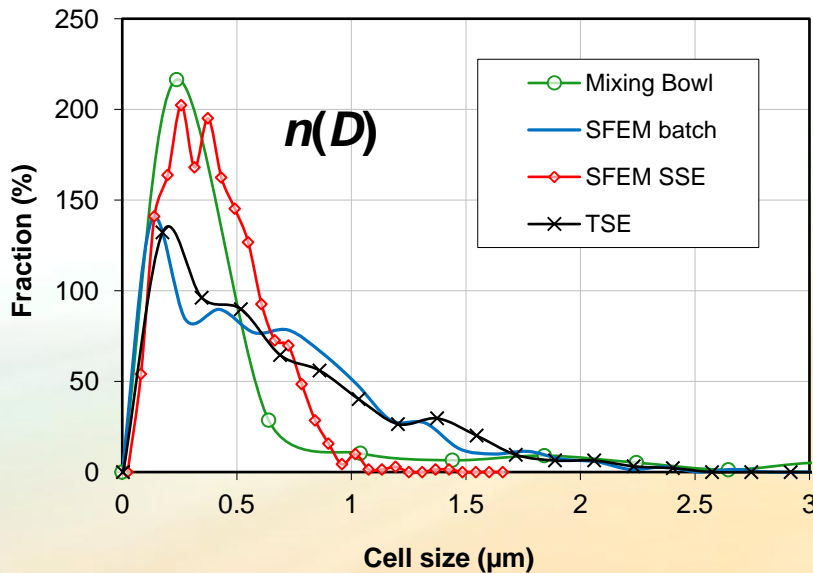
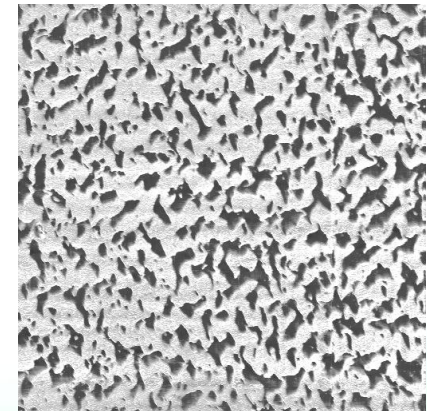
Batch SFEM



SSE w/SFEM



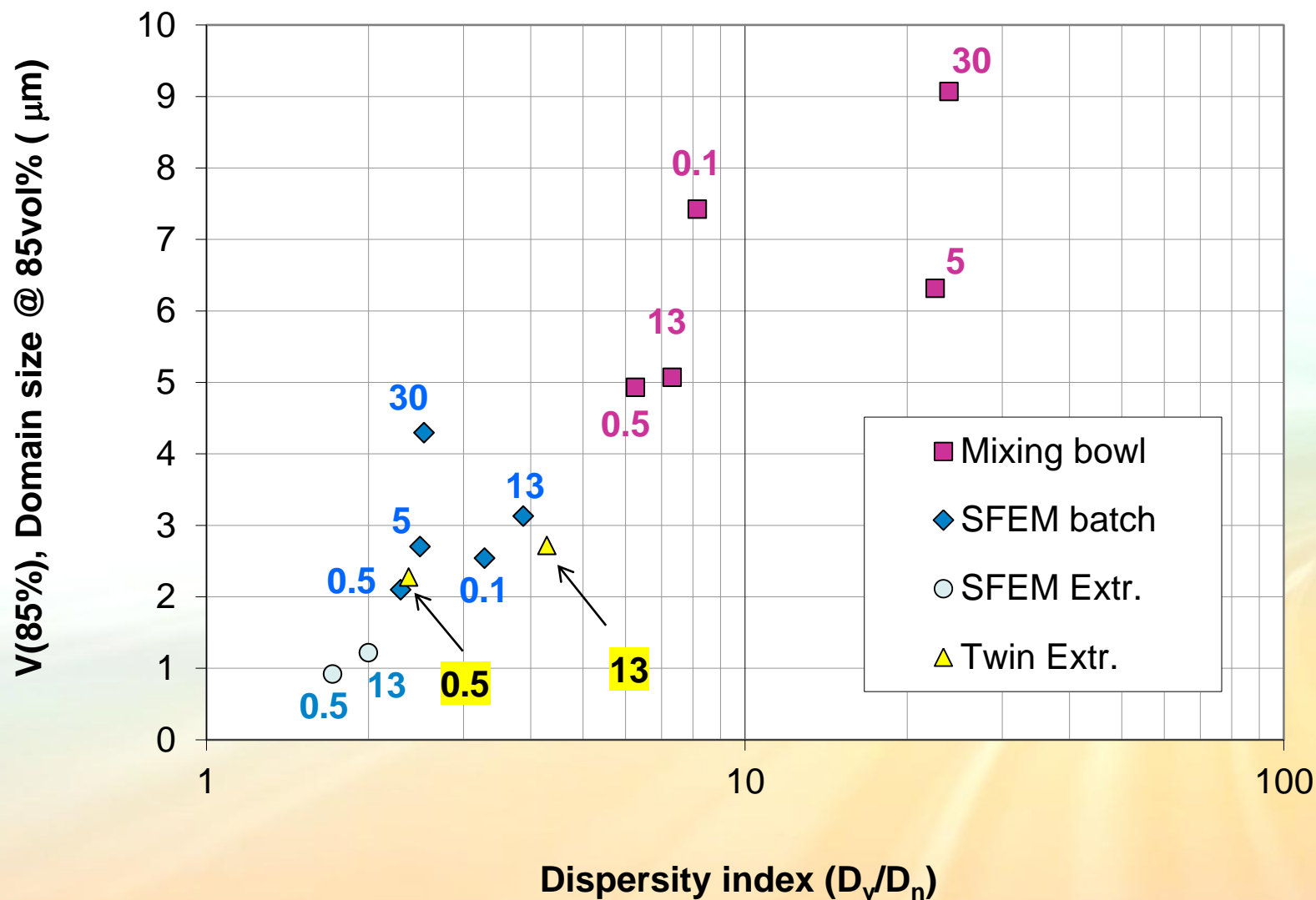
TSE (no SFEM)



□ Data with EO-0.5 confirm previous results

□ Continuous extrusion with 3SFEM elements produces best dispersion

Dispersion map



Numbers indicate the Melt Index of the PE component in the 70% PP / 30% PE blend